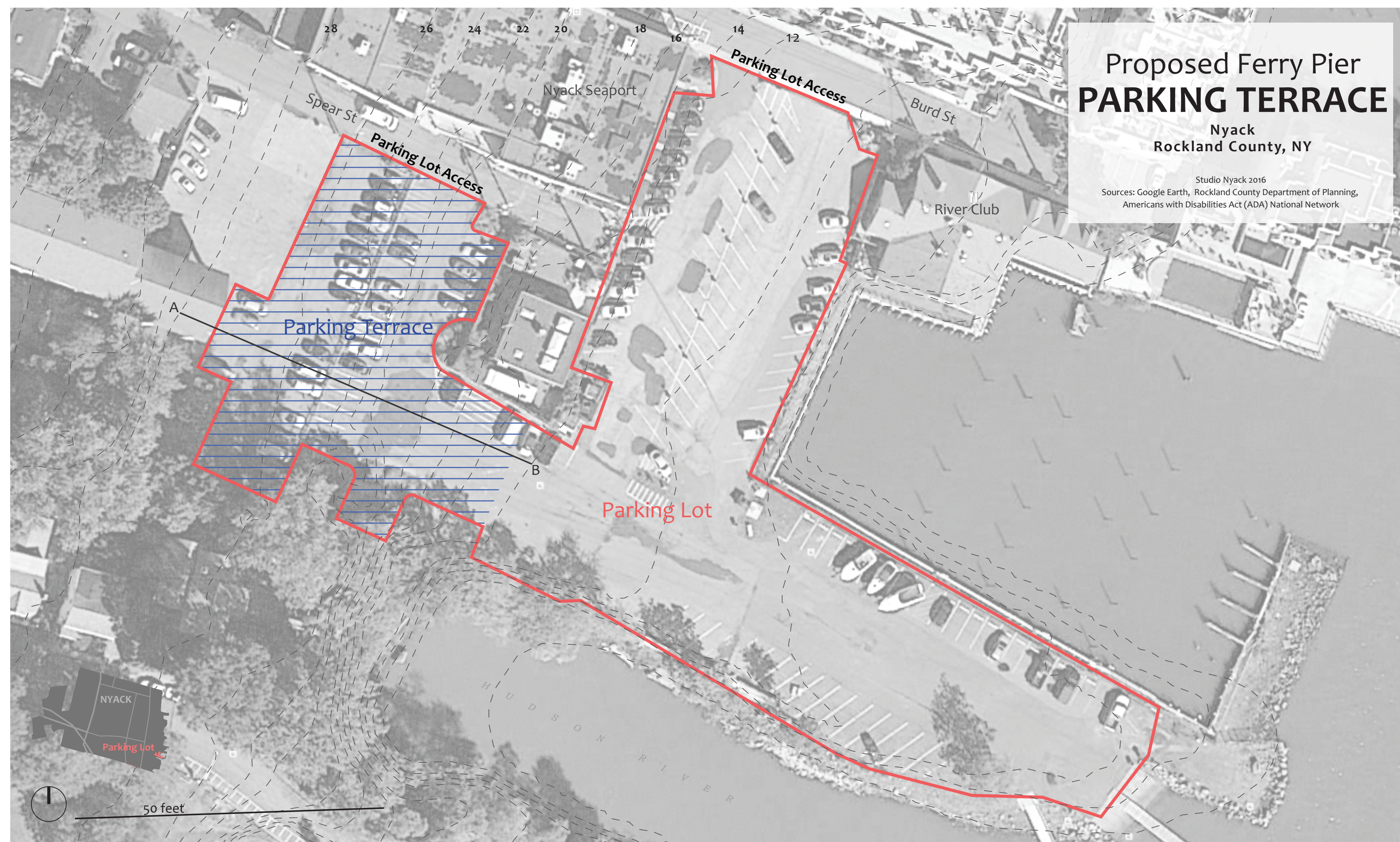


Proposed Ferry Pier Parking

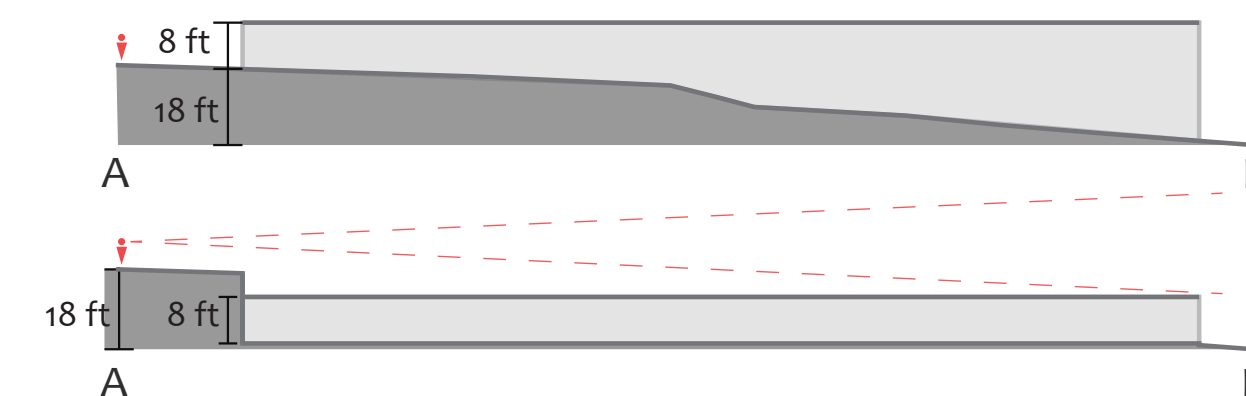


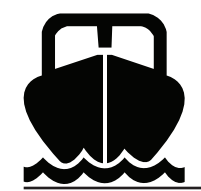
Mixed-use waterfront renewal
Strive to make it less obtrusive

Parking Lot Area:	84,500 sqft
Parking Terrace Area:	23,900 sqft
Total Area:	108,400 sqft

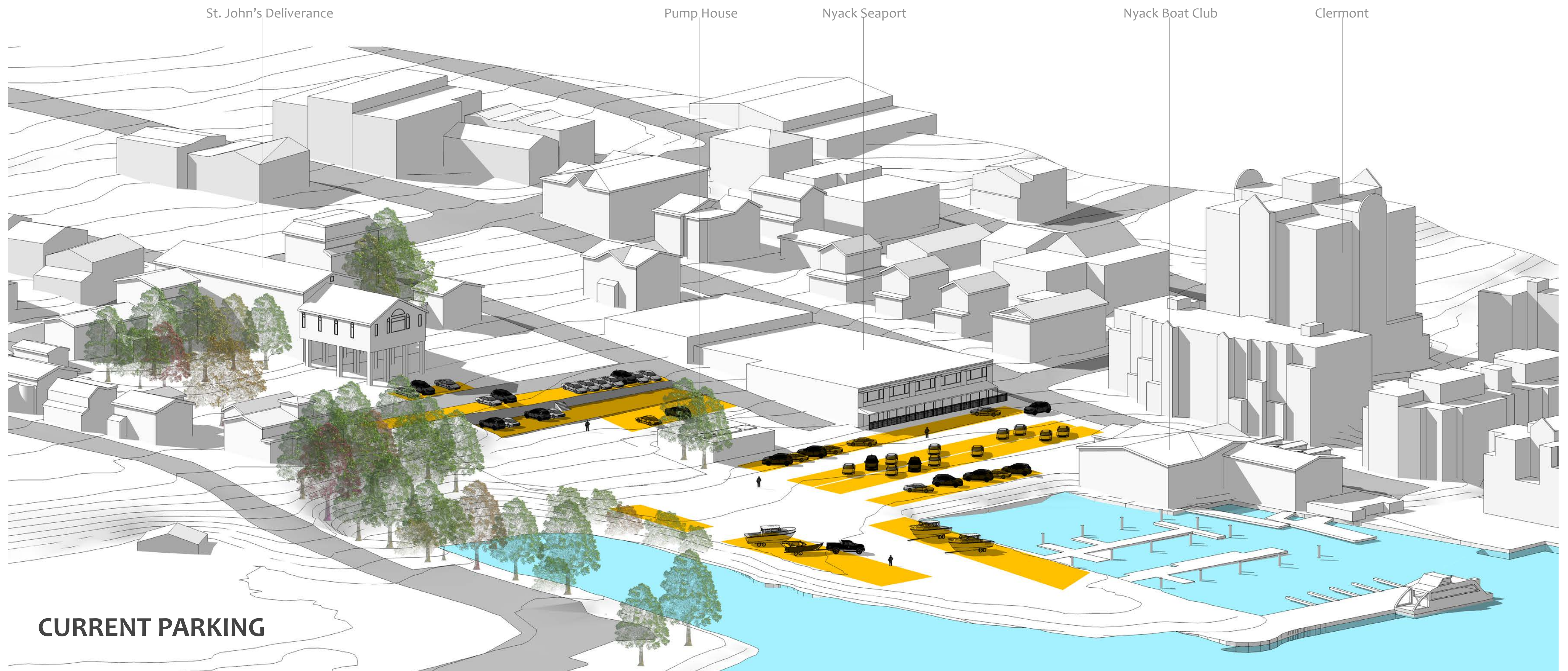
Less Circulation and Landscaping	-20%	-50%
	86,720 sqft	54,200 sqft
Availability:	423+9 Accessible	263+7 Accessible

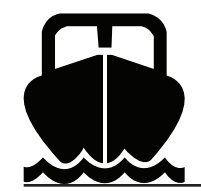
Parking terrace on slope



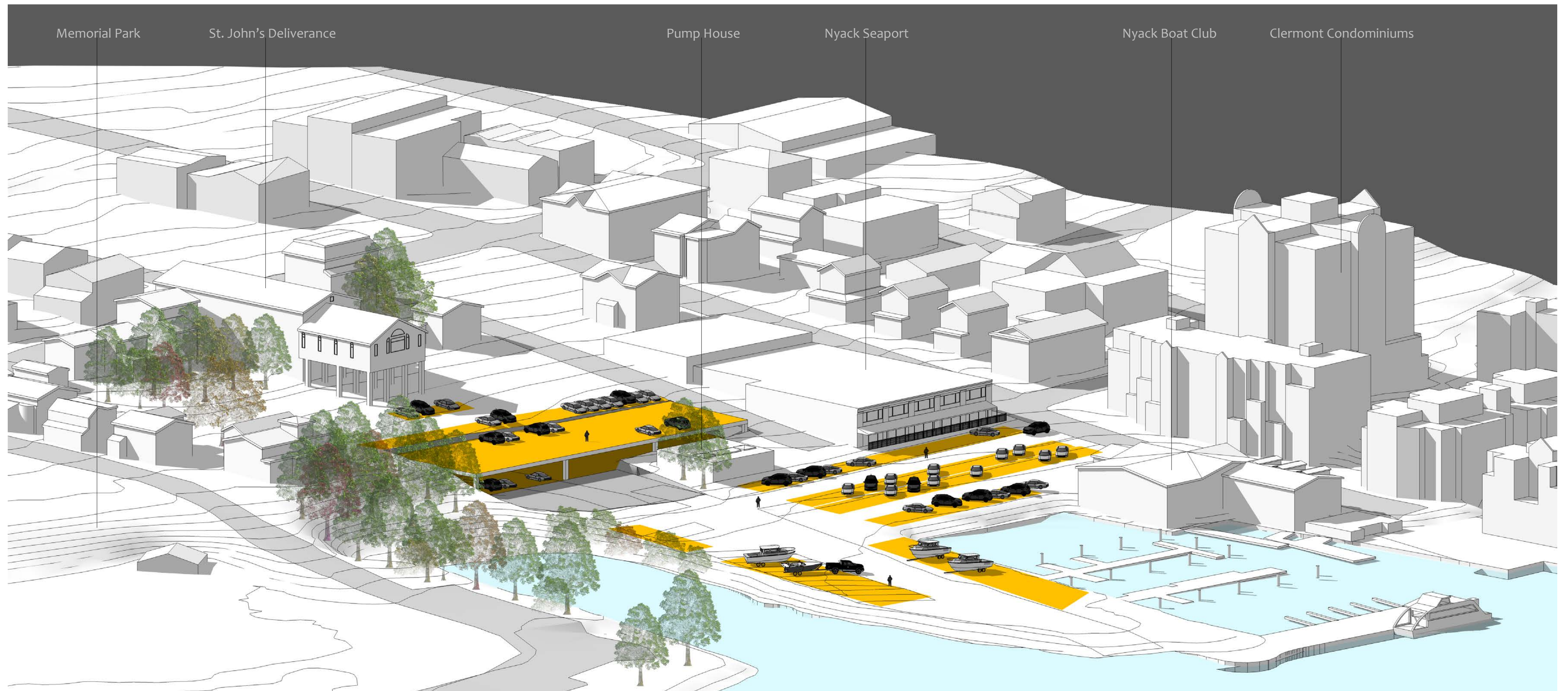


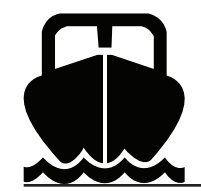
Existing Conditions



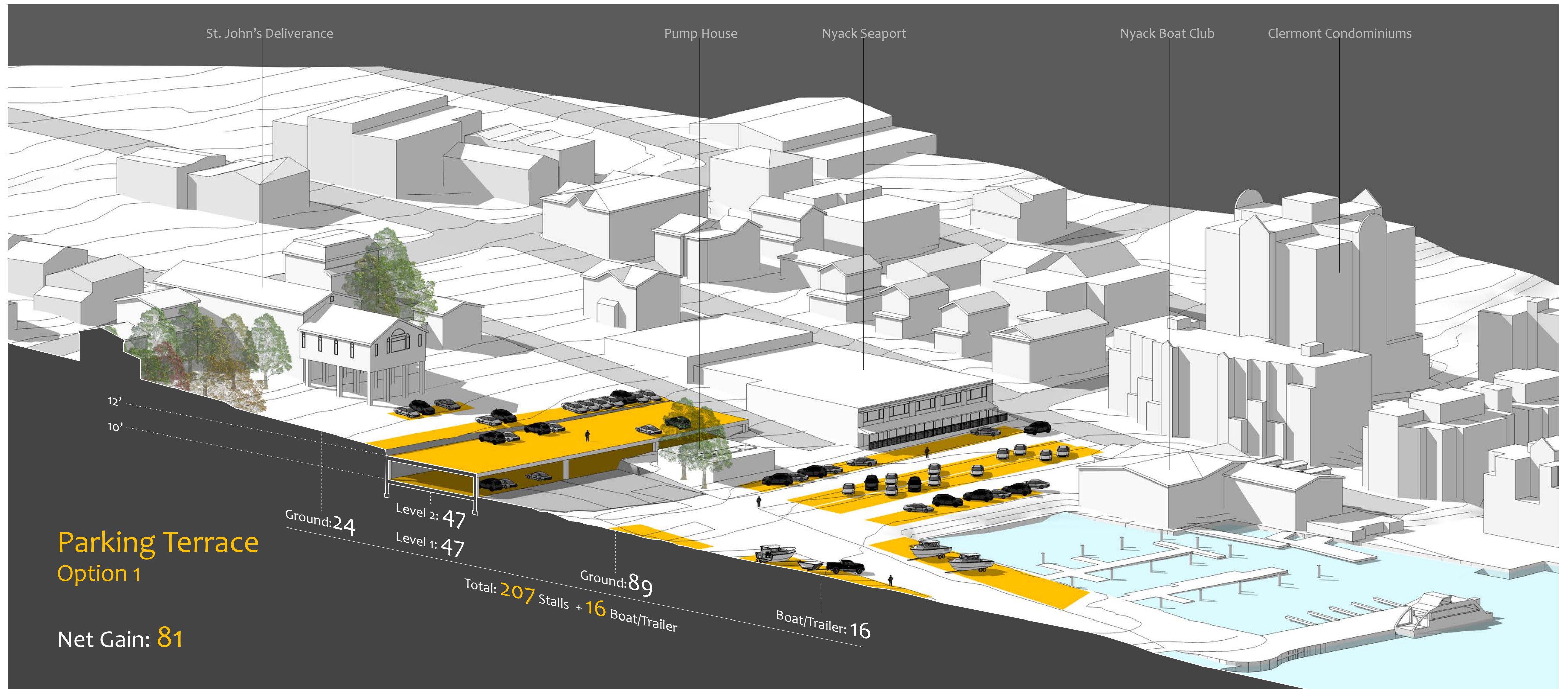


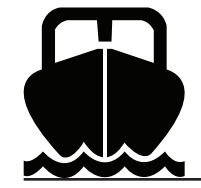
Proposed Ferry Pier Parking - Option 1



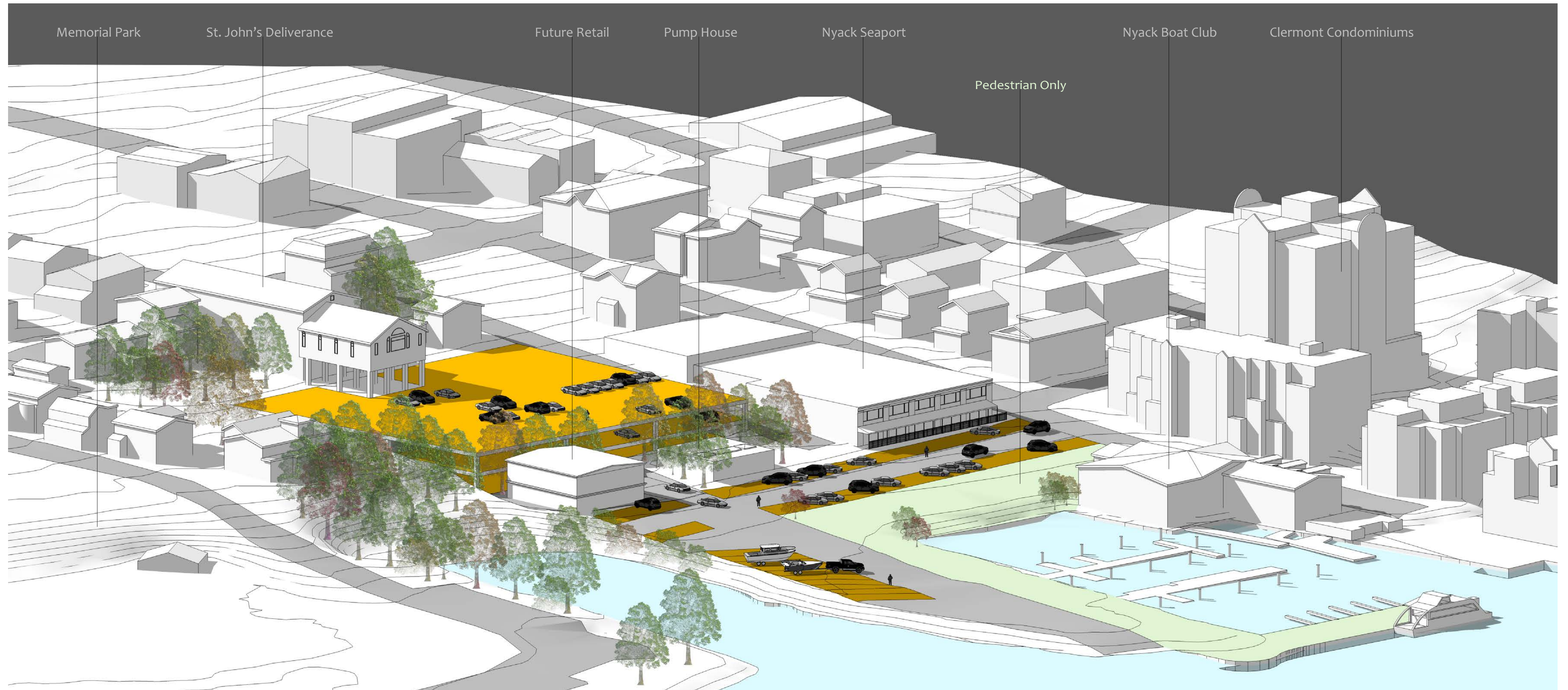


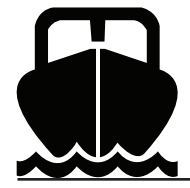
Proposed Ferry Pier Parking - Option 1



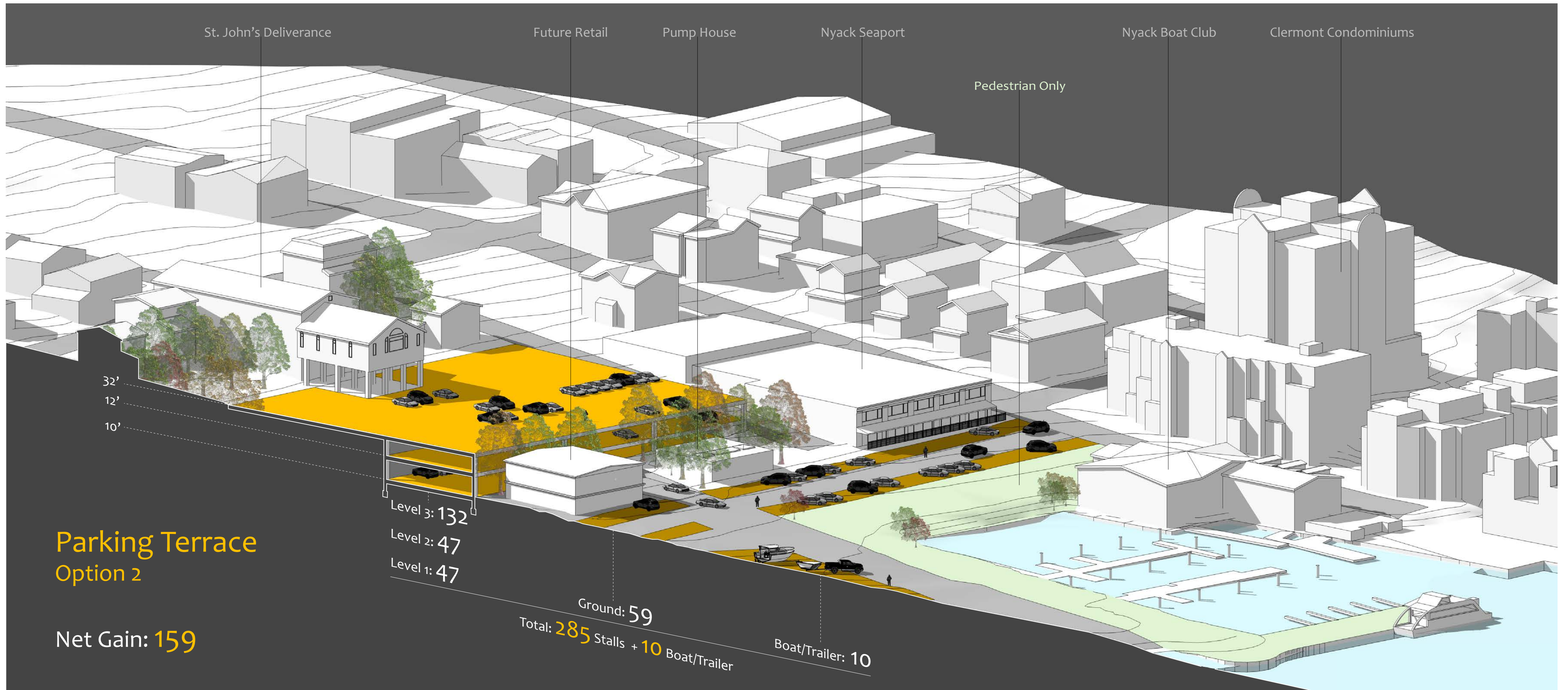


Proposed Ferry Pier Parking - Option 2

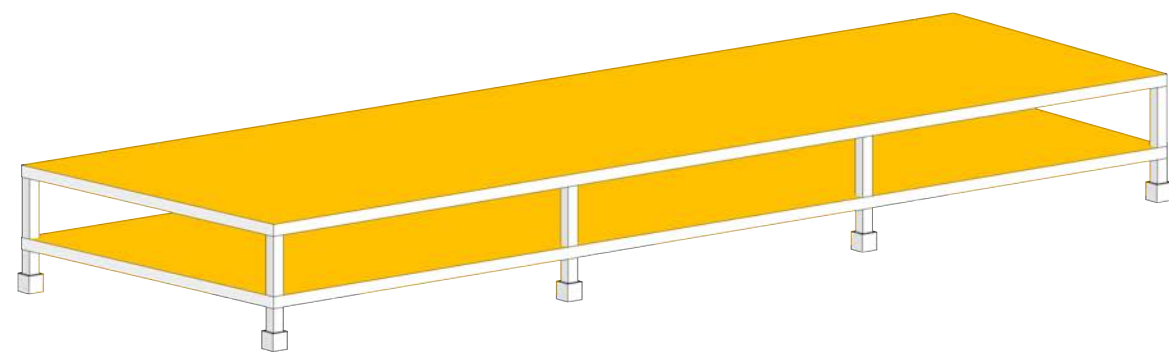




Proposed Ferry Pier Parking - Option 2



Parking Terrace Costs



Option 1 - 94 Stalls

Hard Costs per Stall =	\$25,000	
Hard Costs Total =	\$2,304,000	
Soft Costs (20% - 40%) =	\$461,000	— \$922,000
Total Parking Terrace Cost =	\$2,765,000	— \$3,226,000



Option 2 - 226 Stalls

Hard Costs per Stall =	\$25,000	
Hard Costs Total =	\$5,540,000	
Soft Costs (20% - 40%) =	\$1,108,000	— \$2,216,000
Total Parking Terrace Cost =	\$6,648,000	— \$7,756,000

Source: Carl Walker, Inc. to the nearest thousand

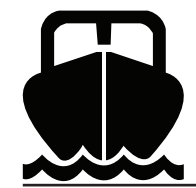
Parking Terrace Costs





Chapter 11

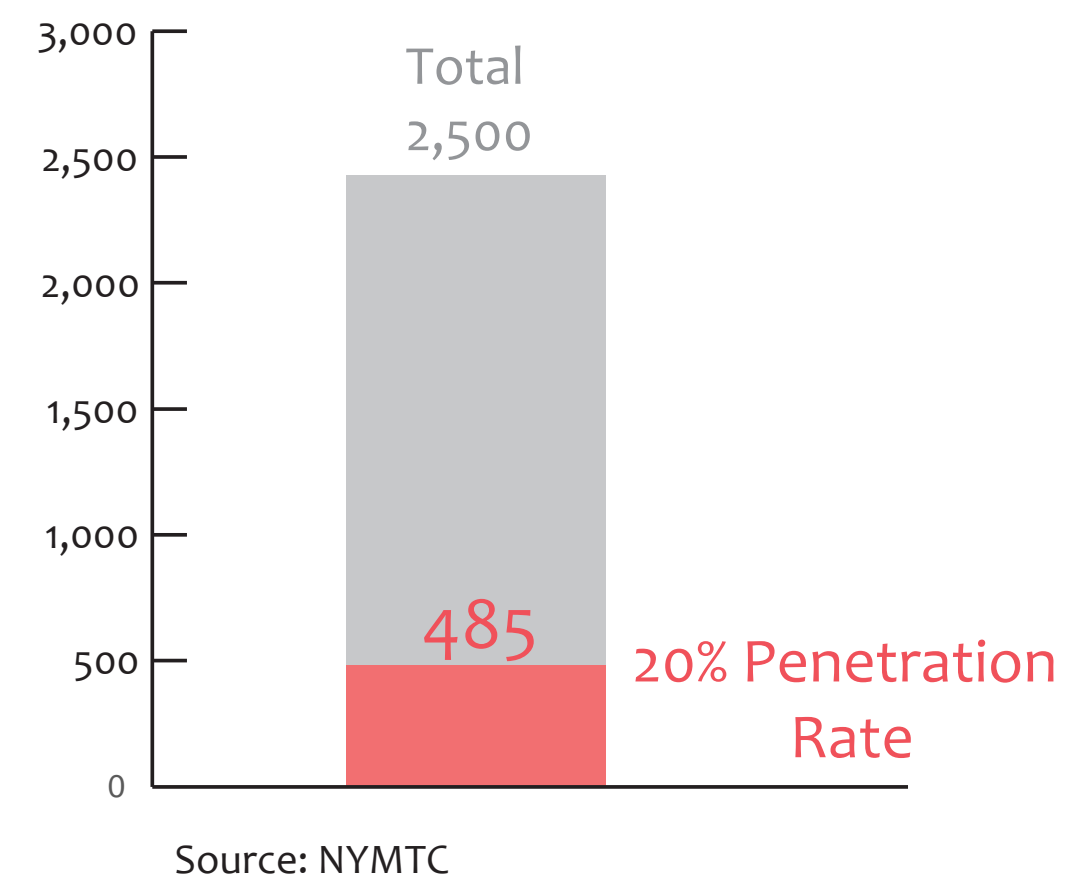
RIDERSHIP PROJECTIONS



Ridership Projection: Nyack - Tarrytown - Midtown Ferry



Projected Ridership for
Nyack - Tarrytown - Midtown

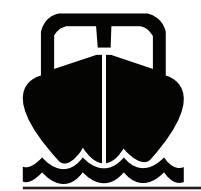


Approximately 485 Daily Work Trips
Adequate Ridership To Midtown

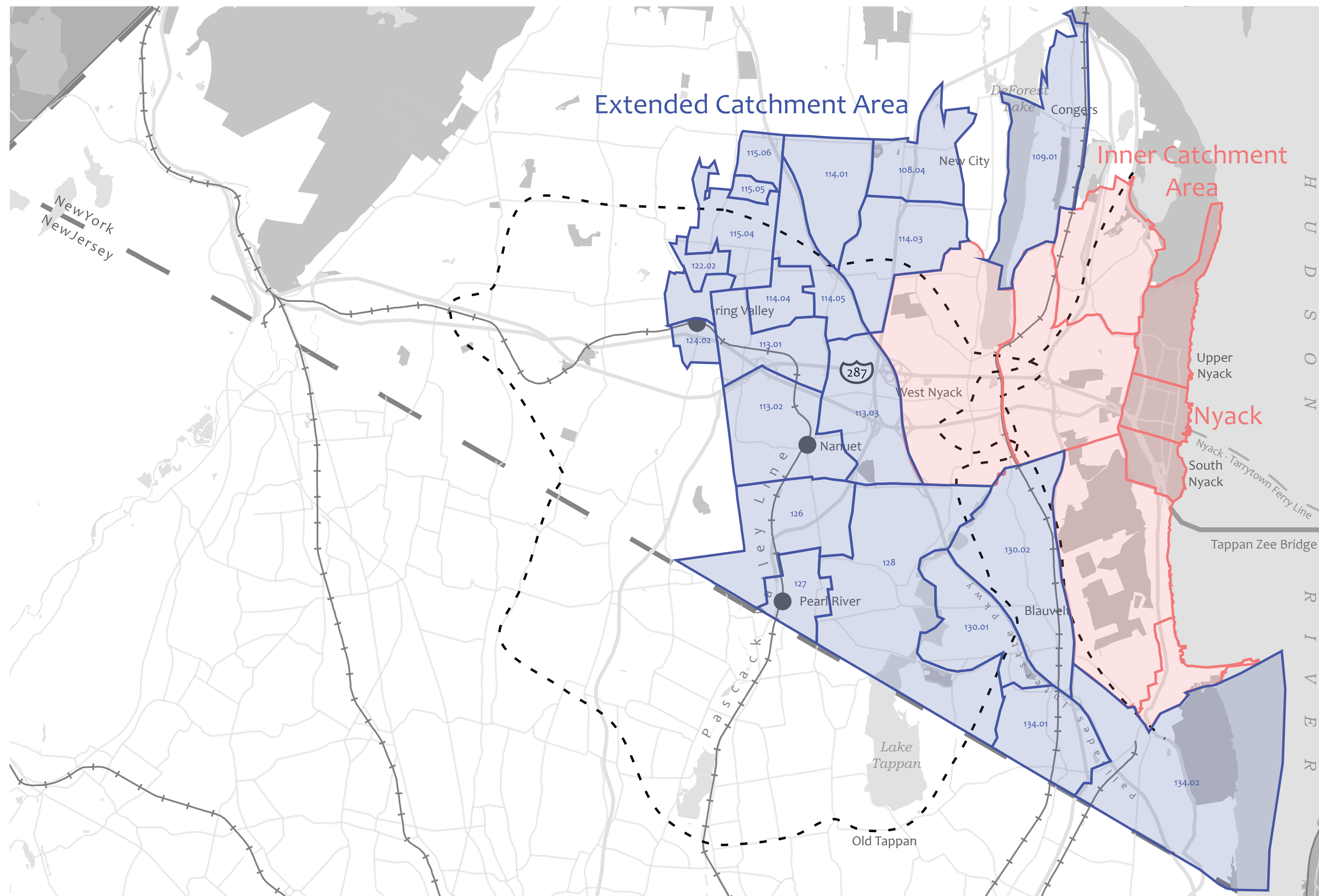
Penetration Rate:
The percentage of commuters projected to choose a ferry

20% Penetration Rate for inner catchment area (10 Minutes from Nyack)

Haverstraw - Ossining Ferry:
Approximately 450 average daily ridership in 2015



Ridership Projection: Extended Catchment Area



Extended Catchment Area

Direct ferry could be more attractive than rail for some commuters

5% Penetration Rate for extended catchment area due to competition from other modes

Pascack Valley Line
Bus to NYC Bus Terminal
(Port Authority)